

# Wall Mount Clothing Rack – Display

[www.simplifiedbuilding.com/solutions/clothing-racks/rack-installation/](http://www.simplifiedbuilding.com/solutions/clothing-racks/rack-installation/)



## Required Tools

- Allen Key (included)
- Hammer (for plugs)
- Wrench (for casters)

## Basic Installation Instructions

- Confirm that you have all the required parts.
- Assemble the parts according to the enclosed diagram.
- When you initially assemble the unit loosely tighten the fitting set screws. After the unit is completely assembled, fully tighten all set screws.
- If installing plugs, place cloth over plug and hammer into place.

## Troubleshooting

- If the rack seems wobbly, loosen the footing set screws and adjust the footing pipes until the rack is stable.

## Base Post Parts

Qty	Part
1	15-6 Elbow
2	61-6 Wall/Floor Flange
1	8' Pipe
1	4" Pipe

## Arm Options

### *Straight Arm*

1	10-6 Single Socket Tee
1	84-6 Metal Cap
1	2' Pipe

### *Z Arm*

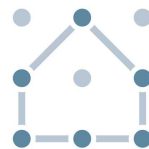
1	10-6 Single Socket Tee
2	15-6 Elbows
1	84-6 Metal Cap
3	11" Pipes

## Required Hardware

4 mounting screws (not included)

**Questions?  
Installation Problems?**

Call Customer Service  
1.888.527.2278

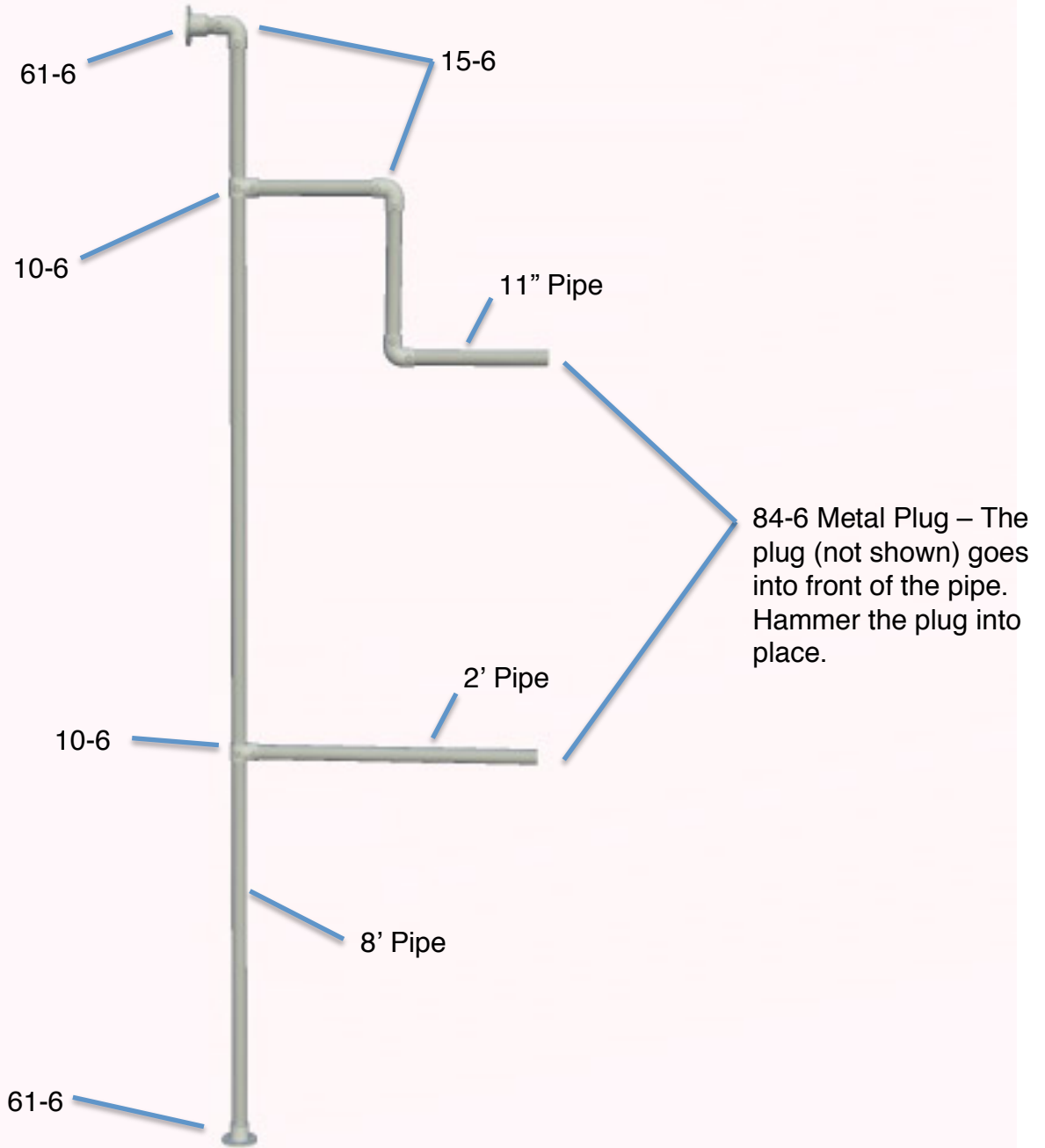


**simplified**  
building concepts  
[www.simplifiedbuilding.com](http://www.simplifiedbuilding.com)

Simple Rack

# Wall Mount Clothing Rack – Display

[www.simplifiedbuilding.com/solutions/clothing-racks/rack-installation/](http://www.simplifiedbuilding.com/solutions/clothing-racks/rack-installation/)



**Questions?  
Installation Problems?**

Call Customer Service  
1.888.527.2278



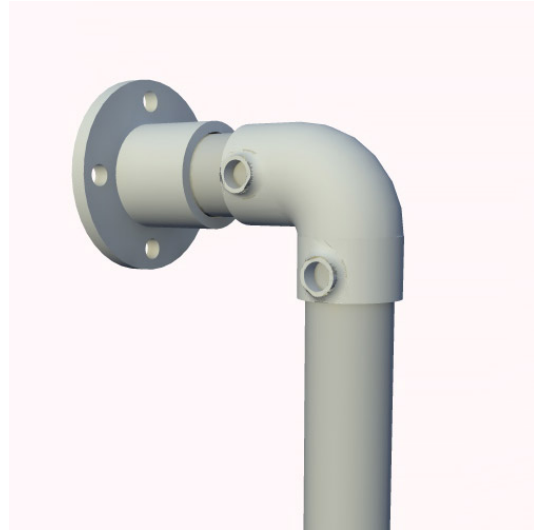
**simplified**  
building concepts  
[www.simplifiedbuilding.com](http://www.simplifiedbuilding.com)

## Wall Mount Clothing Rack – Display

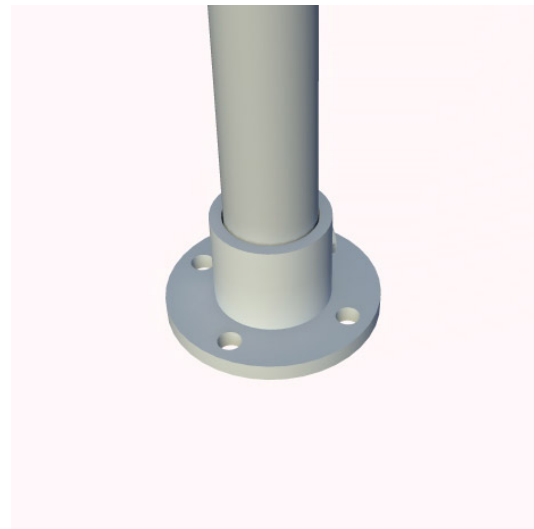
[www.simplifiedbuilding.com/solutions/clothing-racks/rack-installation/](http://www.simplifiedbuilding.com/solutions/clothing-racks/rack-installation/)

### Mounting Information

**Wall Mounting** – Each wall mount requires four screws. The hole size is .26 inches. A #10 size screw works well. If you are mounting to drywall, ensure that you are mounting the rack to a stud or using the appropriate drywall anchors.



**Floor Mounting** – *Mounting the unit to the floor is not required.* If you choose to mount the rack to the floor, use the appropriate hardware in the .26 inch holes of the 61-6 base flange.



**Questions?  
Installation Problems?**

Call Customer Service  
1.888.527.2278



**simplified**  
building concepts  
[www.simplifiedbuilding.com](http://www.simplifiedbuilding.com)