

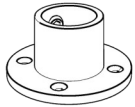
Simple Table

Z-Frame Table Frame

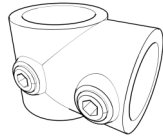
SIMPLIFIED
BUILDING



Fittings



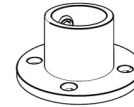
5X
61-7
Flange



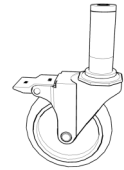
1X
10-7
Single Socket Tee



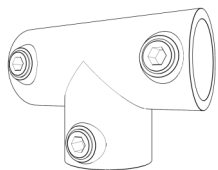
4X
133-7
Plastic Plug



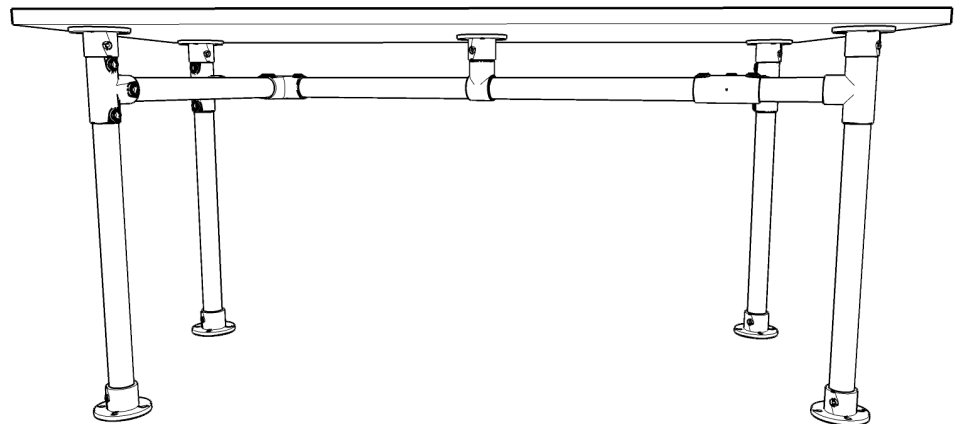
4X
61-7
Flange



4X
Caster
2 braking, 2 non-braking



6X
25-7
Flange

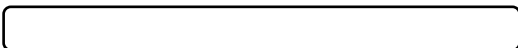


Pipe

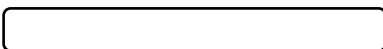
Middle Support, 4 inches (1X)



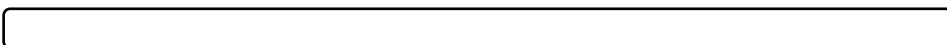
Legs, (4X)



Short Horizontals, (2X)

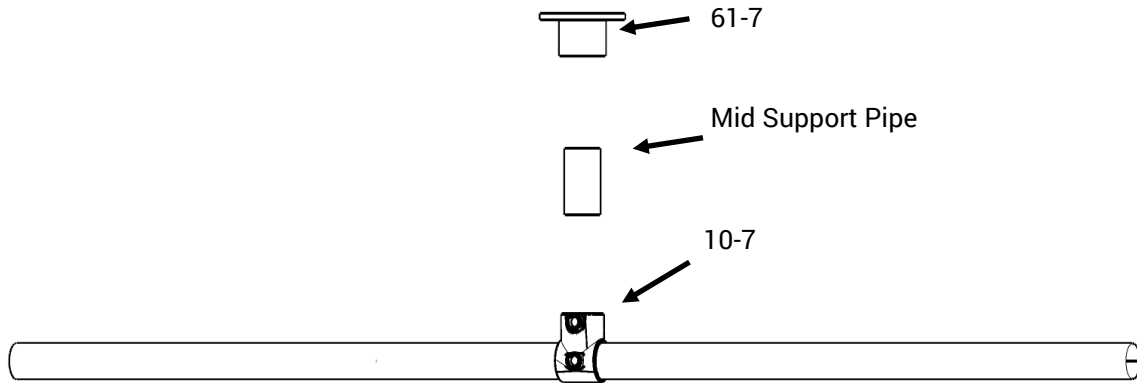


Long Horizontal, (1X)



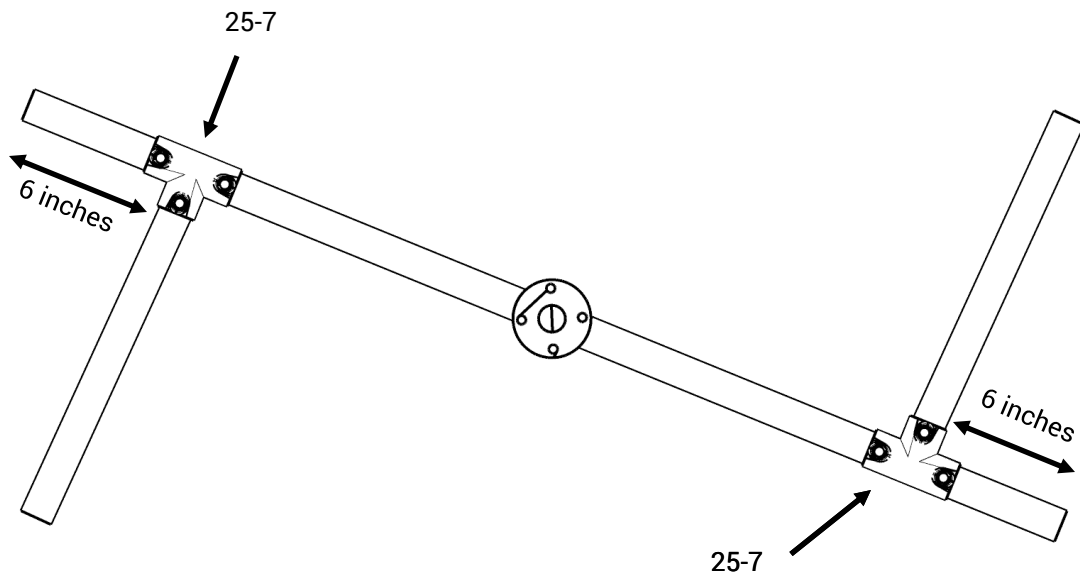
Assembly Instructions

1.



Slide the 10-7 tee onto the Long Horizontal, tightening the set screw at the midpoint. Slide the Mid Support Pipe into the socket on the tee. Slide a 61-7 flange over the other end of the Mid Support Pipe, then tighten set screws.

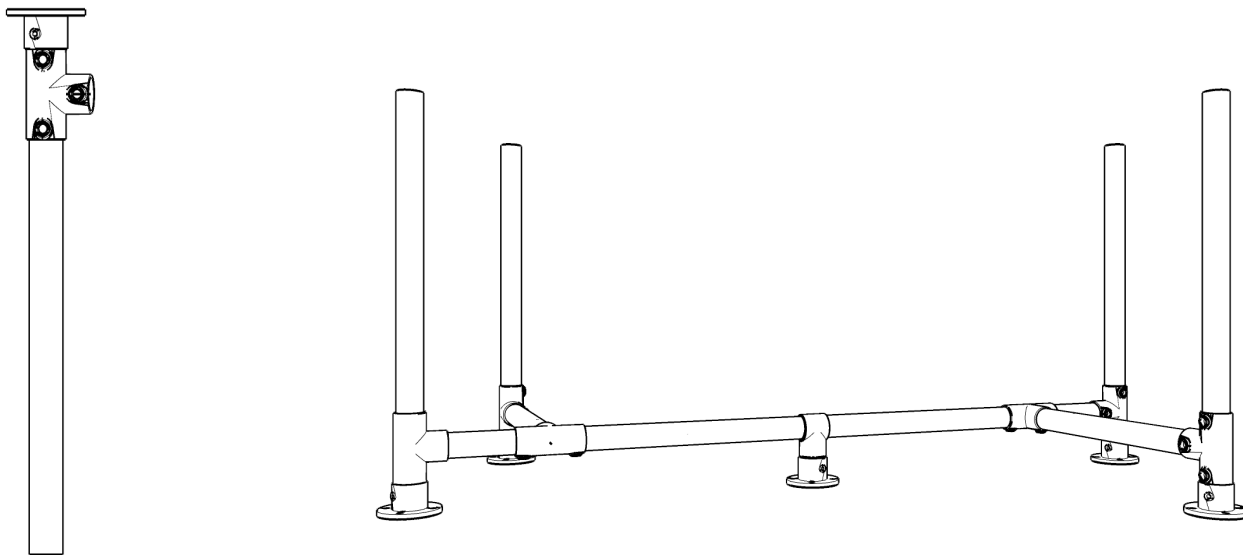
2.



Slide a 25-7 tee onto either end of the long horizontal with the sockets facing opposite directions, perpendicular from the Mid Support. Tighten the set screws approximately 6 inches from the end of the long horizontal. Attach the short horizontals to the open sockets on the 25-7 tees and tighten set screws.

Assembly Instructions

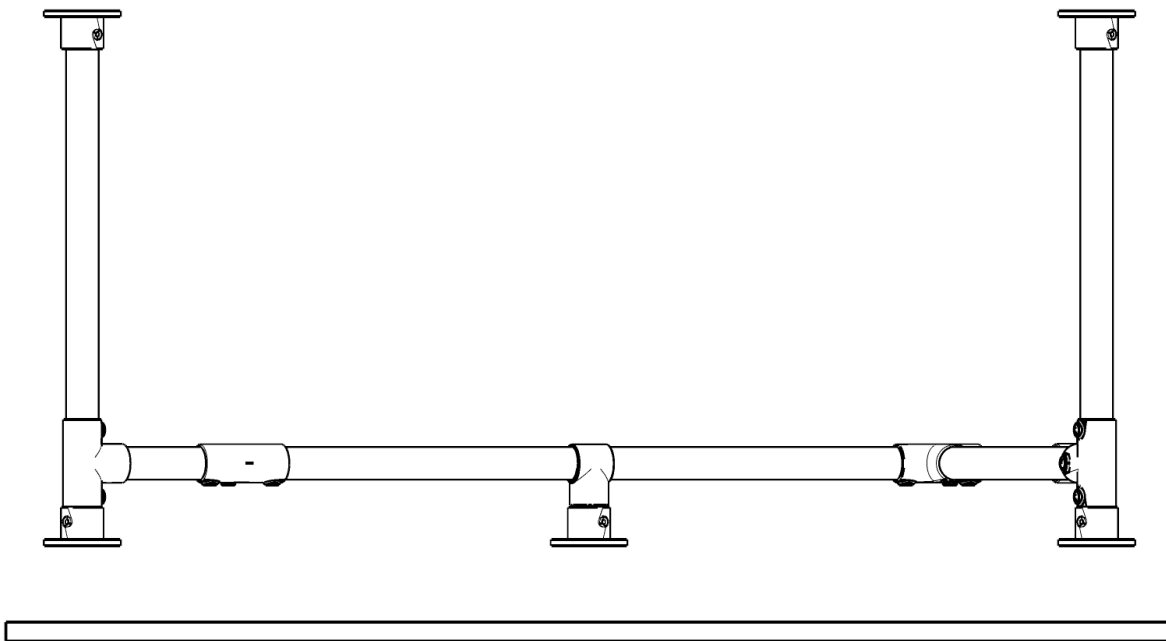
3.



Assemble the four table legs as shown in the diagram above. The 25-7 tee should be attached with 2" of pipe sticking out of one side.

Attach the legs to the Mid Frame as shown in the upper right diagram. Check to make sure the frame is square and level, then tighten set screws.

4.

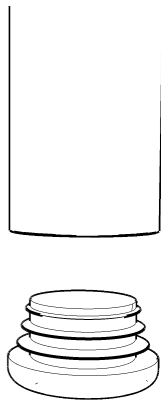


NOTE: If your top is stone or glass, DO NOT PERFORM THIS STEP. Glue neoprene or rubber feet to the flanges to prevent movement.

For wood tops, lay your table top on the floor face down and center your frame on top of it. Use 1/4 inch screws no longer than the thickness of your table top to attach the frame.

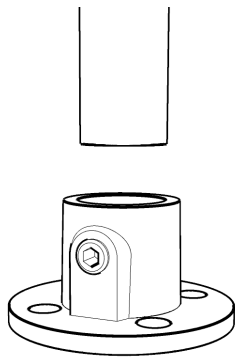
Footing Options

1.



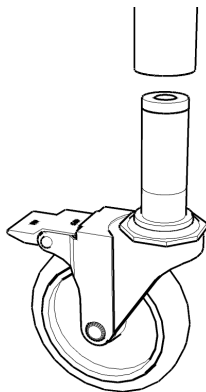
Press the tapered end of the 133-7 Plastic Plug against the end of the pipe. Use a hammer or mallet to tap the plug until the dome is flush with the pipe end.

2.



Slide the socket of the 61-7 Flange over the end of the pipe until it is touching the base plate of the flange. Tighten the set screw.

3.



Tighten the tension ring at the top of the stem until the stem is expanded slightly smaller than the inside diameter of the pipe. Slide the stem all the way into the pipe end, and begin twisting the entire caster clockwise. Once the stem stops spinning with the wheel, the caster is properly installed.

These instructions are meant to be a guide, and are not a substitute for construction experience. Consider consulting a contractor for your installation. For more information regarding Simple Rail, visit our website at <https://www.simplifiedbuilding.com/>, or speak to one of our team members, at 1 (888)527-2278.