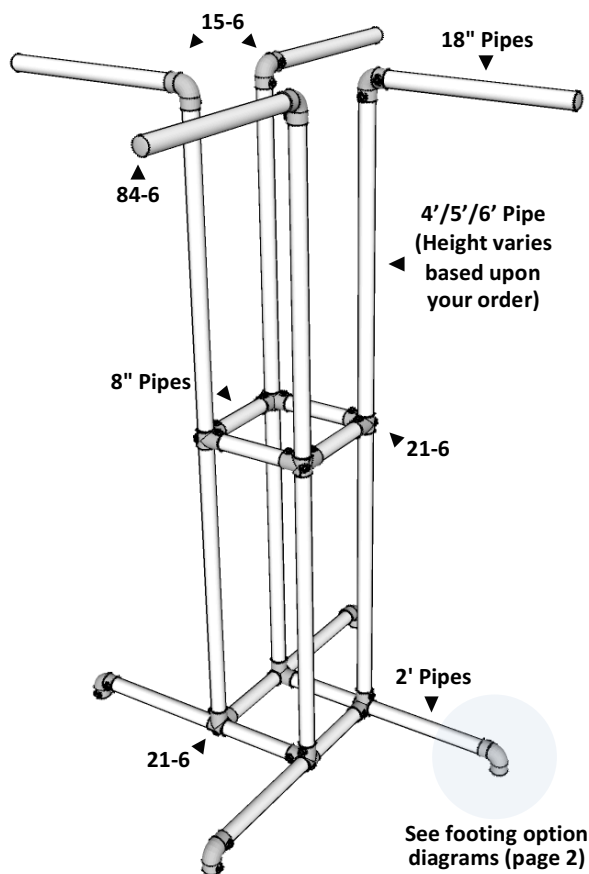


Simple Rack

Four Way Clothing Rack

Kit Instructions



Basic Installation Instructions

1. Confirm that you have all the required parts.
2. Assemble the parts according to the enclosed diagram.
3. When you initially assemble the unit loosely tighten the fitting set screws. After the unit is completely assembled, fully tighten all set screws.
4. If installing plugs, place cloth over plug and hammer into place.

Troubleshooting

If the rack seems wobbly, loosen the footing set screws and adjust the footing pipes until the rack is stable.

Parts

Standard Rack Parts

Qty Part

- | | |
|---|-----------------------|
| 4 | 15-6 90 Degree Elbow |
| 8 | 21-6 Side Outlet Tees |
| 4 | 84-6 Malleable Plugs |
| 4 | 2' Pipes |
| 4 | 18" Pipes |
| 4 | 8" Pipes |
| 4 | 4'/5'/6' Pipe |

Footing Options

- | | | |
|--------|---|-------------------------|
| Elbow | 4 | 15-6 Elbows |
| Post | 4 | 15-6 Elbows |
| | 4 | 4" Pipes |
| | 4 | 133-6 Plastic Plugs |
| Flange | 4 | 15-6 Elbows |
| | 4 | 4" Pipes |
| | 4 | 61-6 Flange |
| Flat | 4 | 15-6 Elbows |
| | 4 | 4" Pipes |
| | 4 | 59-6 Spigot Flange |
| Caster | 4 | 10-6 Single Socket Tees |
| | 4 | 4" Pipes |
| | 4 | 84-6 Metal Plugs |
| | 2 | Casters |
| | 2 | Casters w/ Break |

Tools

- Allen Key (included)
- Hammer (for plugs)
- Wrench (for casters)

Questions or Installation Problems?

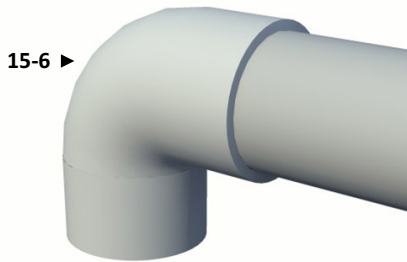
Customer Service | 1.888.527.2278

Simple Rack

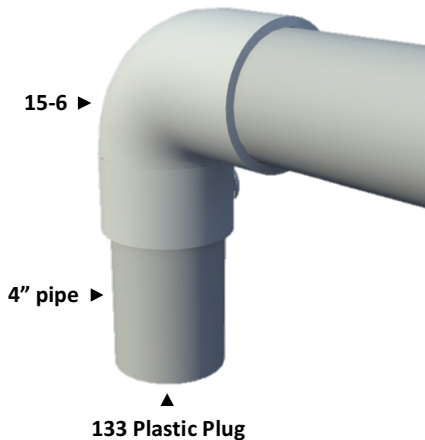
Four Way Clothing Rack

Kit Instructions

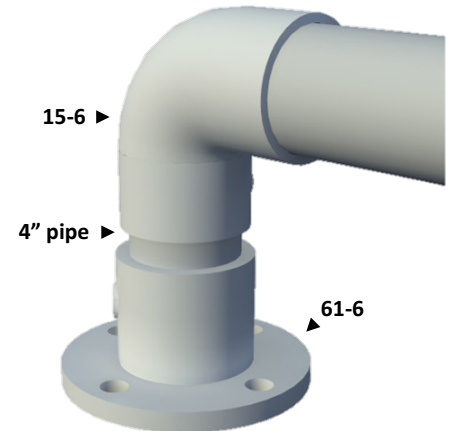
Elbow Footing



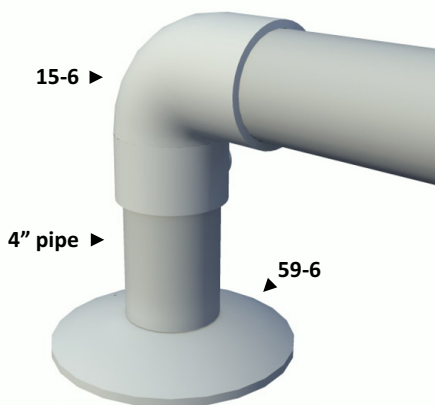
Post Footing



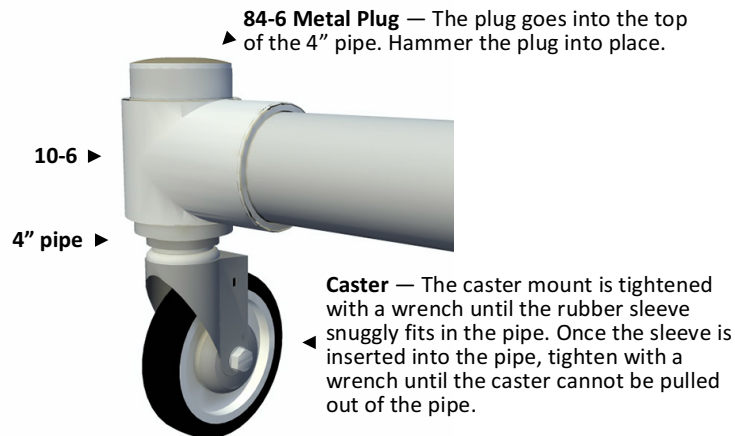
Flange Footing



Flat Footing



Caster Footing



Questions or Installation Problems?

Customer Service | 1.888.527.2278